

Bela Reka

APAR  MANI
K O P A O N I K



Bela Reka

APARMANI
K O P A O N I K



KONCEPT

Kvalitet života meri se uzajamnim odnosom ambijenta, prirode i čoveka. Tom samom idejom vodio se i tim ljudi građevinskog preduzeća Biro inženjering iz Jagodine koji je osmislio i realizovao svoju ideju na objektu Apartmani Bela Reka. Sam objekat Vam nudi jedinstven koncept života u centru najznačajnije turističke destinacije u Srbiji – planine Kopaonik. Sama ideja je sa jednim osnovnim zadatkom, a to je da se kvalitet života podigne na jedan viši nivo.

Apartmani Bela Reka je objekat koji svojim položajem i orijentacijom zauzima centralno mesto turističkog centra Bela Reka – Brzeće, Kopaonik.

CONCEPT

The quality of life is measured by mutual relation of ambient, nature and human been. With that idea, the team of people from construction company "Biro inzenjering" from Jagodina was led, and it has realized and created its idea on the structure Apartments Bela Reka. The structure offers you an unique life concept in the centre of the most important tourist destination in Serbia - the mountain Kopaonik. The idea has only one basic task to increase the quality of life on higher level.

The Apartments Bela Reka is a structure, which takes central place of the tourist centre Bela Reka - Brzece, Kopaonik by its position and orientation.



Bela Reka

APAR MANI
K O P A O N I K



LOKACIJA

Apartmani Bela Reka su našli svoje mesto u podnožju Kopaonika u istoimenom turističkom centru Bela Reka – Brzeće, koje je sve dostupnije i pitomije od samih vrhova. Kako se nalazi na idealnoj nadmorskoj visini od 1050 m, ovaj turistički centar, između ostalog i zbog svojih neverovatnih prirodnih lepota, predstavlja idealno mesto za porodičan boravak, boravak sportista i dece kao i osobama sa zdravstvenim tegobama.

Sam objekat lociran je u centralnom delu turističkog centra, celom svojom dužinom prati glavnu saobraćajnicu Brzeće-Blaževo u dužini od 120 m'. Glavni ulaz u središte turističkog centra je kroz pasaž samog objekta, a odmah iza ulaza na udaljenosti od 20 m' nalazi se polazna stanica žičare Bela Reka, kao i istoimena skijaška staza u dužini od 3.150 m. Povezanost žičare Bela Reka u jedinstven sistem žičara Kopaonika omogućava skijašima koji borave u podnožju dostupnost svih ski staza Kopaonika.

LOCATION

The Apartments Bela Reka found their place in the foot of Kopaonik in having the same name tourist centre Bela Reka – Brzece, , that is more available and cultivated then the tops. As it can be found on ideal sea level from 1050 m, this tourist centre, accept its own remarkable natural beauties, presents an ideal place for family stay, stay of sportsmen and children as well as the persons with health disorders.

The structure is located in the central part of the tourist center, with whole of its length follows the traffic route Brzece – Blazevo 120 m long. The main entrance to the tourist centre is through the passage of the same structure, and just after the entrance, on the distance of 20m there is starting station of cable railway of Bela Reka, and having the same name a ski slope 3.150 m long. Connection of cable railway of Bela Reka in unique system of cable railways of Kopaonik enable to the skiers, who stay in the foot, to have approach to all ski slopes on Kopaonik.



Bela Reka

APAR MANI
K O P A O N I K



LOKACIJA

Prema master planu Ministarstva za ekonomiju i regionalni razvoj predviđa se početak izgradnje moderne Gondolske žičare, na postojećoj trasi žičare Bela Reka, koja bi omogućila vrlo brz, kvalitetan i udoban prevoz više skijaša od Brzeća do vrha Kopaonika.

Objekat Apartmani Bela Reka čine kompleks koji predstavlja celinu i posetiocima pruža kompletan užitek kako vizuelno tako i velikom ponudom sadržaja.

Sama lokacija objekta je izabrana zbog :

- centralnog položaja
- neverovatnih prirodnih lepota
- veličanstvenih pogleda iz Apartmana
- pozicije polazne stanice žičare Bela Reka, odn. budućom stanicom Gondole
- odličnom prilazu glavnom putu sa autobuskim stajalištem i ostalim sadržajima
- sigurnim investicionim potencijalom

LOCATION

According to master plan of Ministry of economy and regional development it has been predicted a construction of a modern Gondols cable railway on the place of existing cable railway Bela Reka, which would enable very quick, quality and comfortable transportation of more skiers from Brzece to the top of Kopaonik.

The structure Apartments Bela Reka contains complex, which represents a whole and gives to visitors a complete enjoying visually and also the great offer of contents.

The location of the structure has been chosen because of:

- central position
- remarkable natural beauties
- magnificent views from Apartments
- position of starting station of cable railway Bela Reka, that is future station of Gondola
- excellent approach to the main road with the bus stops and other contents
- safety investment potential

- | | | |
|---------------------------|--------------------------|---|
| 1 apartments "Bela Reka" | 7 lodge "Rankovic" | 13 "Suncani apartmani" |
| 2 apartments "Bele staze" | 8 Weg City | 14 archeological locality "Nebeske stolice" |
| 3 hotel "Bela Reka" | 9 "Parking servis" | 15 cable railway "Bela Reka" |
| 4 hotel "Dobrodolac" | 10 ethno house "Koliba" | ambulance |
| 5 apartments "Zvezdice" | 11 hotel "Junior" | post office |
| 6 hotel "Ozon" | 12 apartments "Kopaonik" | police station |



Bela Reka
APARTMANI
KOPANIK

© 2009 Europa Technologies
© 2009 Tele Atlas
Image © 2009 DigitalGlobe

© 2009 Google

Bela Reka

APARMANI
K O P A O N I K



OBJEKAT

Objekat Apartmani Bela Reka je namenjen ljudima koji umeju da cene život i koji zahtevaju određen nivo funkcionalnosti, kvaliteta i dizajna. Objekat je postavljen svojom podužnom osom u pravcu sever-jug, i zbog svoje pozicije, veličine i izgleda predstavlja centralni objekat centra.

Apartmansko-turistički objekat Apartmani Bela Reka projektovan je kao petoetažni objekat (prizemlje + 2 sprata + 2 potkrovlja). Ukupna površina objekta od 6.500 m² sastoji se od 5.000 m² stanbenog prostora, 1.240 m² poslovnog prostora.

Prizemlje objekta rezervisano je za raznovrstan i bogat sadržaj za odmor i relaksaciju. U poslovnom delu će, shodno uslovima, biti centralni restoran, cafe bar, igraonica za decu, mini market, ski servis, wellness centar, rent-a-car i ostali prateći sadržaji. Stambeni deo obuhvata prostor od I-IV sprata sa ukupno 174 apartmana različitih struktura i veličina, od trokrevetnog veličine 25 m² do petokrevetnog apartmana sa 47 visoko kvalitetnih kvadratnih metara.

STRUKTURE

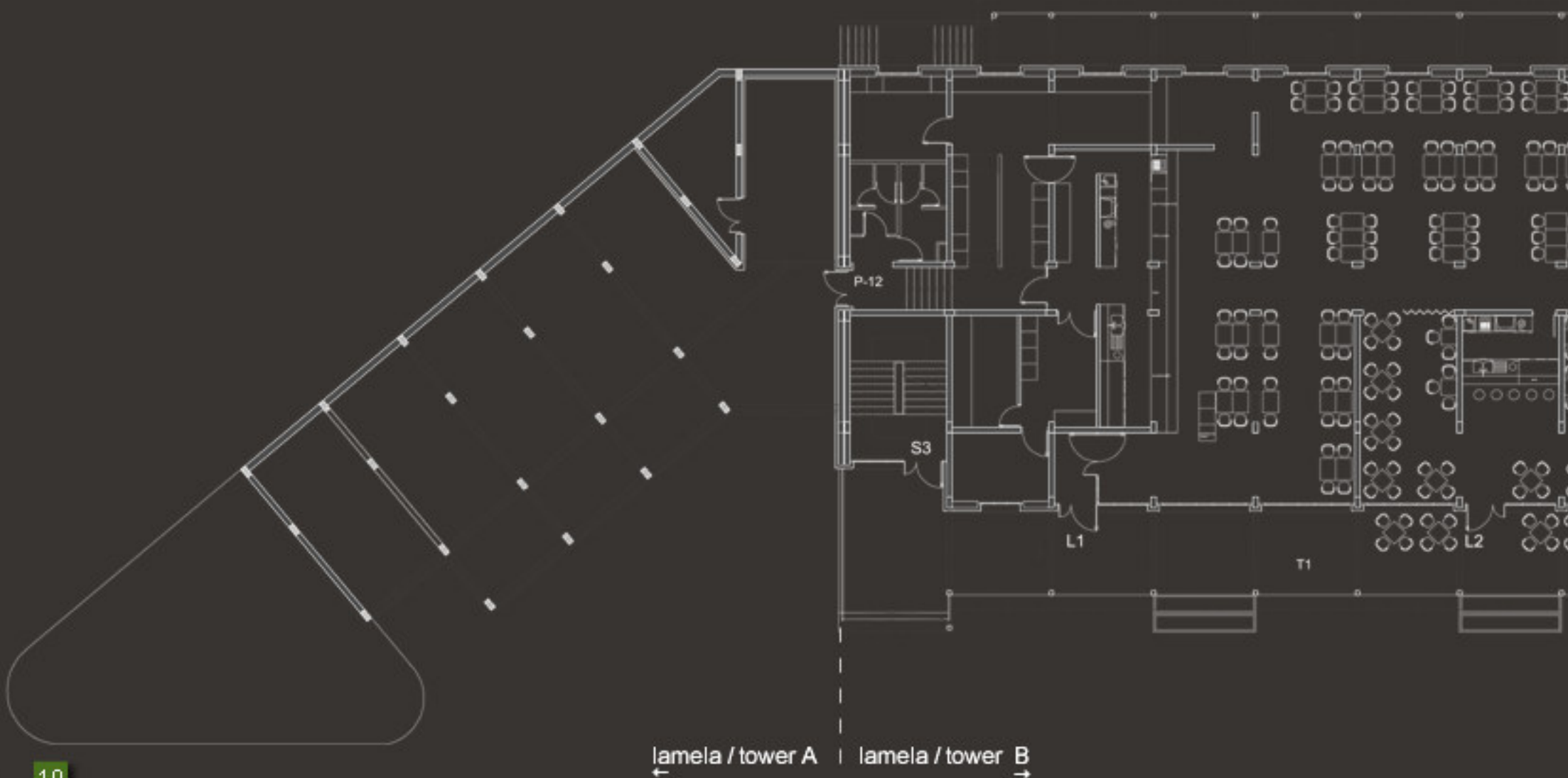
The structure Apartments Bela Reka is aimed to the people who know to appreciate the life and who demand a certain level of functionality, quality and design. The structure is placed by its lengthen axe in direction north – east, and because of its position, size and look, it represents central structure of the center.

Apartment - tourist structure the Apartments Bela Reka is projected as five-floors structure (ground floor + 2 floors +2 attics). Total area of the structure of 6.500 m² contains 5.000 m² of housing space, 1.240 m² of business space.

Ground floor of the structure is booked for various and rich content for resting and relaxation. In the business part there will be, according to the conditions, the central restaurant, coffee bar, game room for children, mini market, ski service, wellness center, rent-a-car and other following contents. Housing part includes the space from I-IV floor with all 174 apartments of various structures and sizes, from the triple apartment of 25m² size to five-bed apartment with 47 high quality square meters.



PRIZEMLJE | GROUND FLOOR



Lamela A Tower A

Sadržaj lamele A i B u prizemnoj etaži, kao i kompletna suturenska etaža namenjeni su celom kompleksu, u okviru kojih će se, shodno uslovima, nalaziti centralni restoran, caffe bar, igraonica za decu, mini market, ski servis, wellness centar rent-a-car i ostali prateći sadržaji

Lamela B Tower B

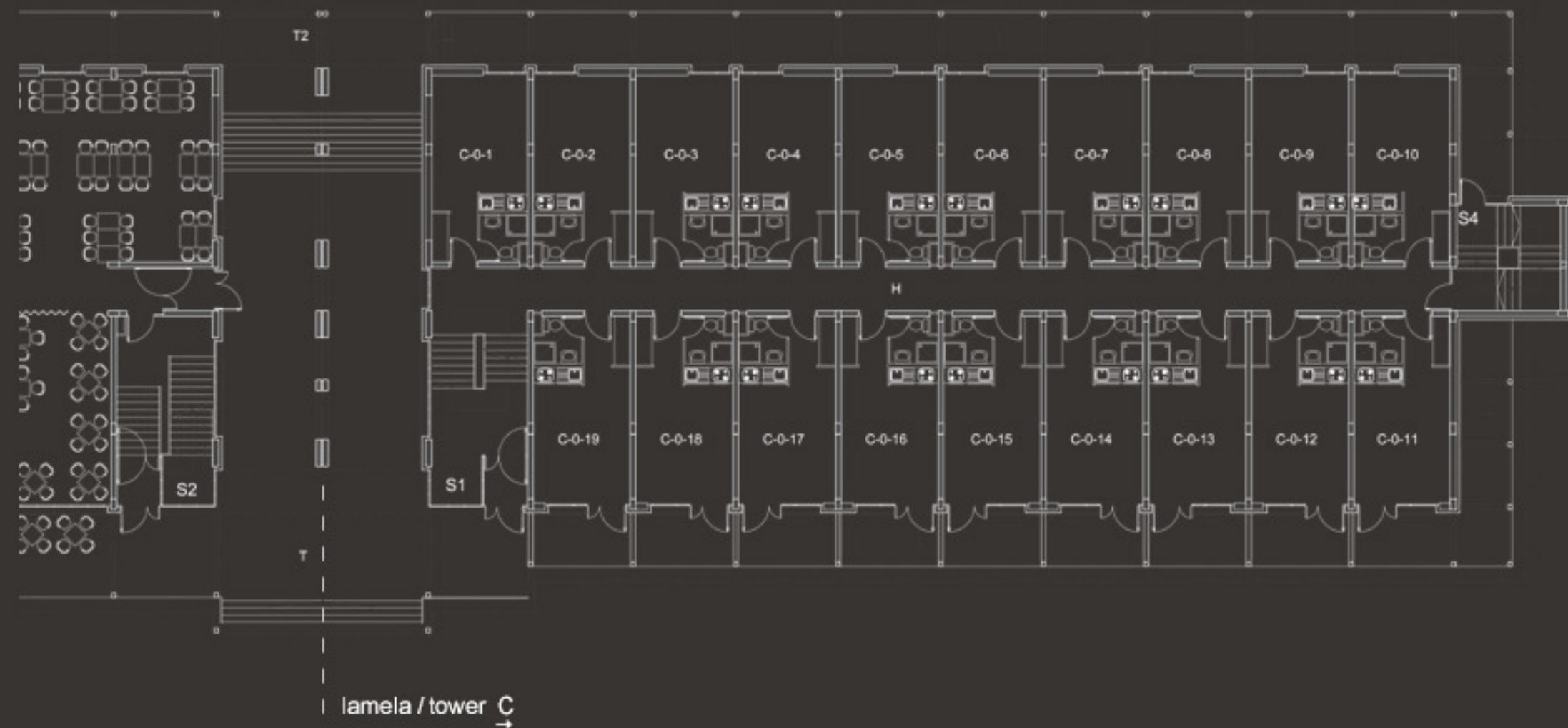
Contents of towers A and B in ground floor, as well as complete basement floor, are intended for the whole complex, within which, according to the conditions, will be central restaurant, coffee bar, children's playroom, mini market, ski service, wellness center, rent-a-car and other additional contents

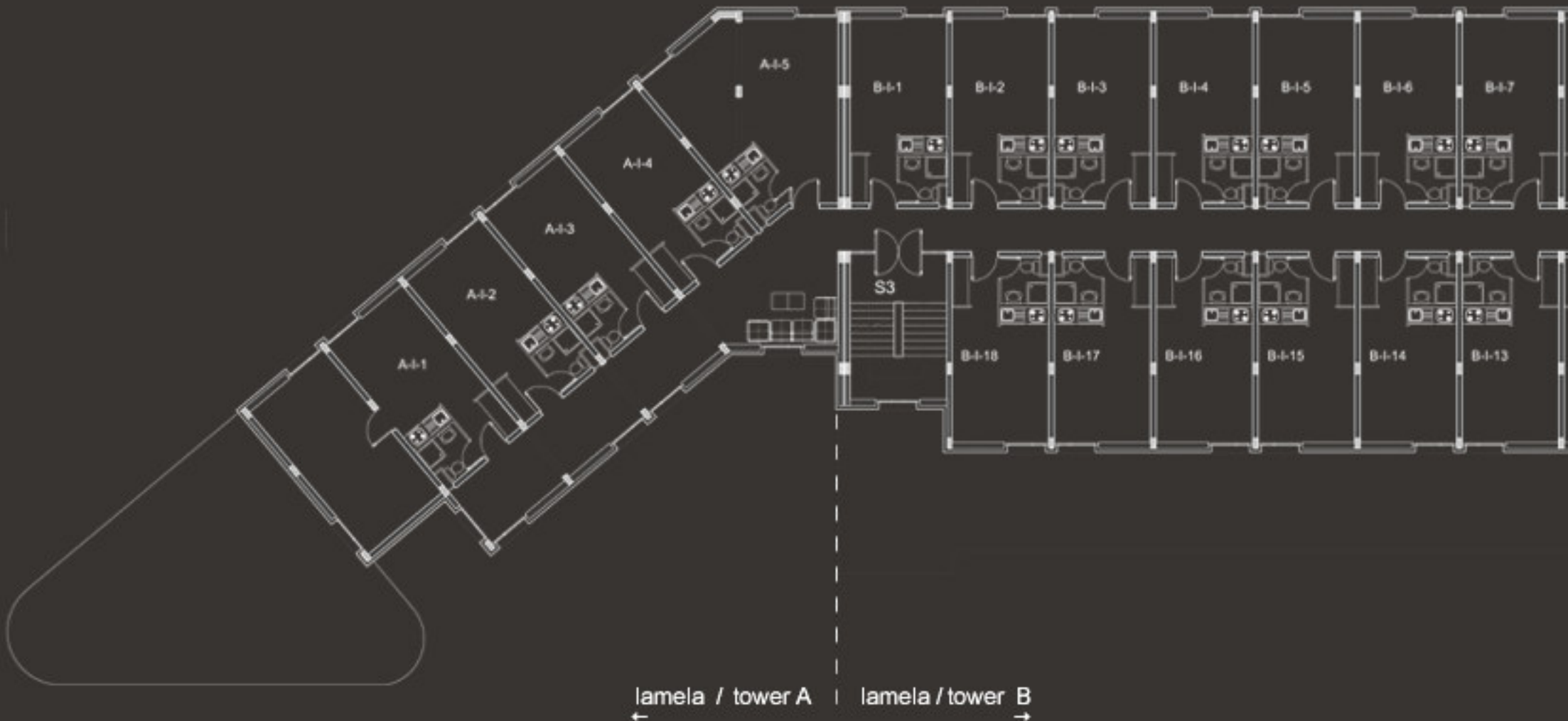
Lamela C

- * broja apartmana u lameli: 19
- * ukupna površina apartmana u lameli 535 m²

Tower C

- * tower apartment number : 19
- * total apartment area of the tower: 535 m²





Lamela A * broja apartmana u lameli: 6

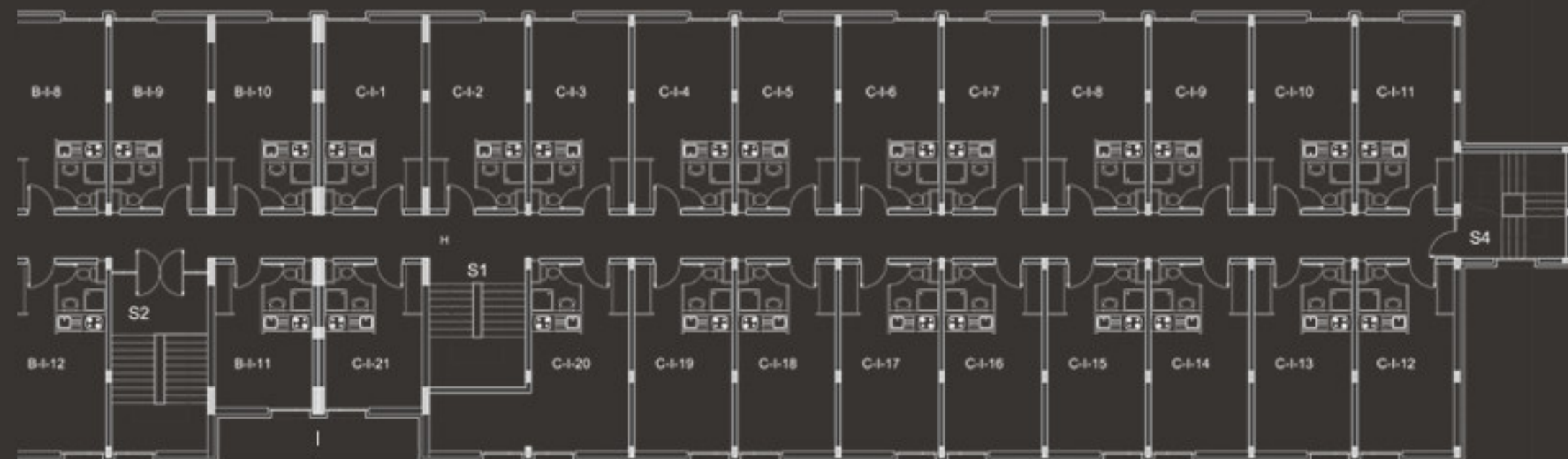
Lamela B * broja apartmana u lameli: 18
* ukupna površina apartmana u lameli 440 m²

Lamela C * broja apartmana u lameli: 21
* ukupna površina apartmana u lameli 522 m²

Tower A * tower apartment number : 6

Tower B * tower apartment number : 18
* total apartment area of the tower 440 m²

Tower C * tower apartment number : 21
* total apartment area of the tower 522 m²



lamela / tower C
→

II SPRAT | II FLOOR



Lamela A * broja apartmana u lameli: 4

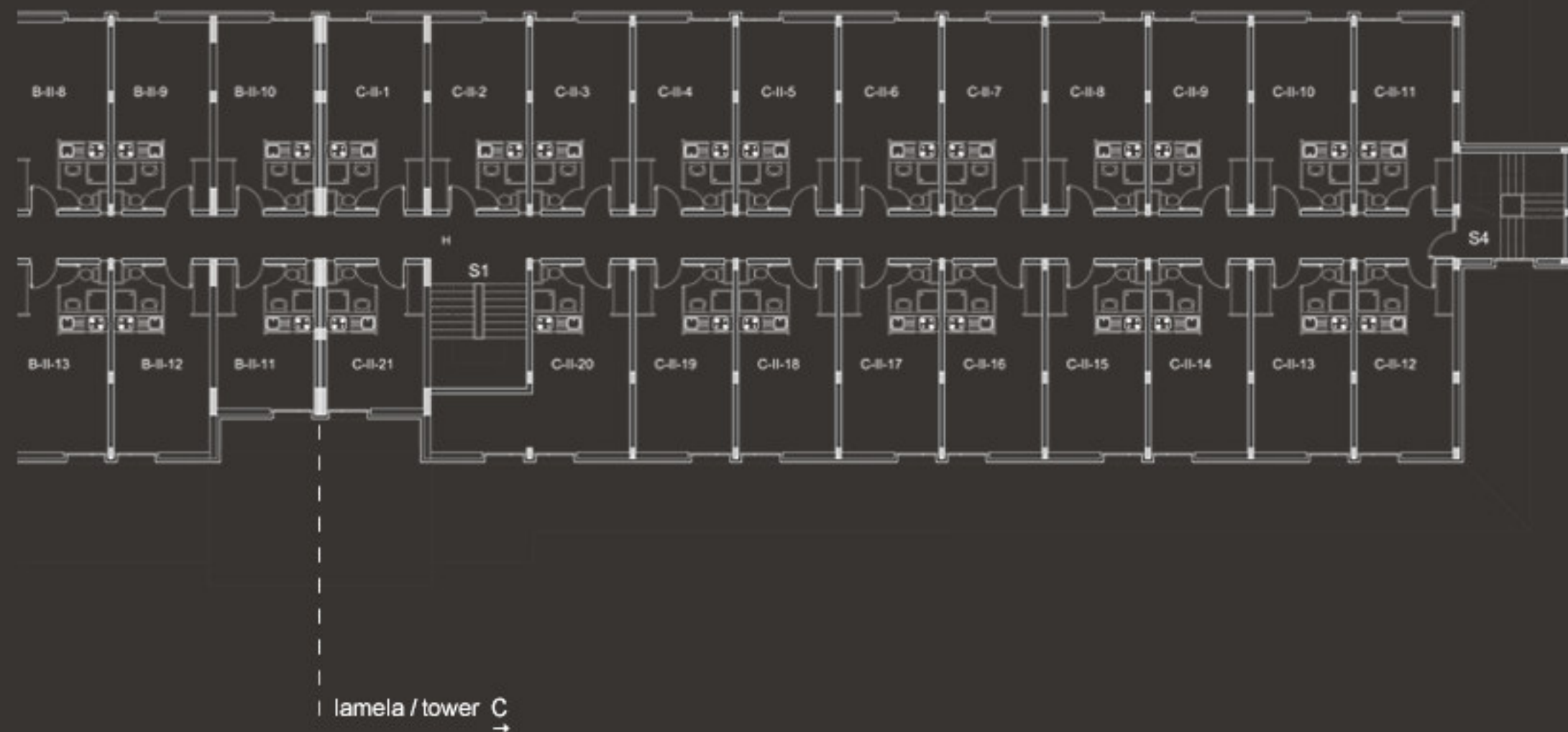
Tower A * tower apartment number : 4

Lamela B * broja apartmana u lameli: 19
* ukupna površina apartmana u lameli 465 m²

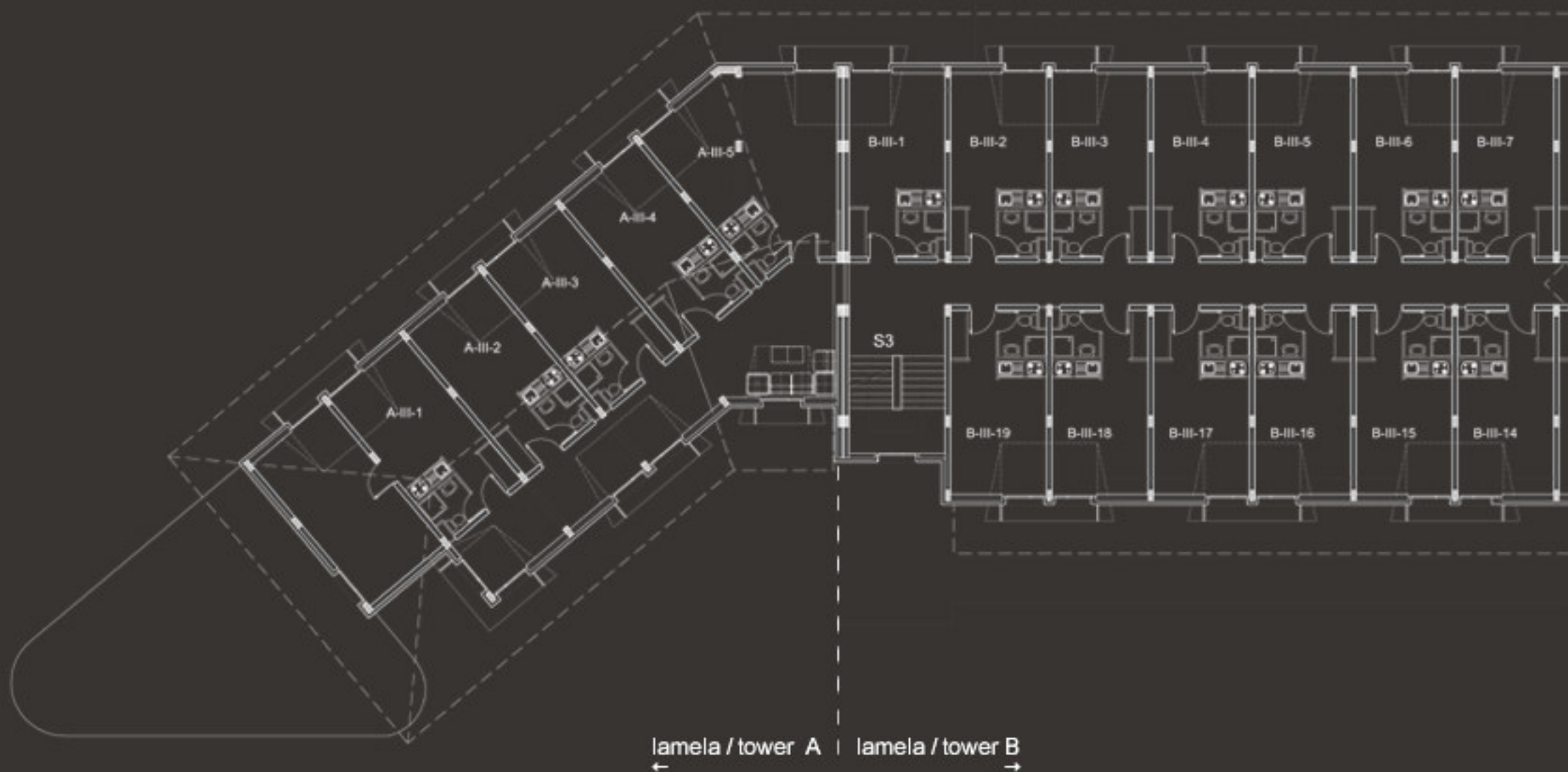
Tower B * tower apartment number : 19
* total apartment area of the tower 465 m²

Lamela C * broja apartmana u lameli: 21
* ukupna površina apartmana u lameli 522 m²

Tower C * tower apartment number : 21
* total apartment area of the tower 522 m²



POTKROVLJE 1 | ATTIC 1



Lamela A • broja apartmana u lameli: 4

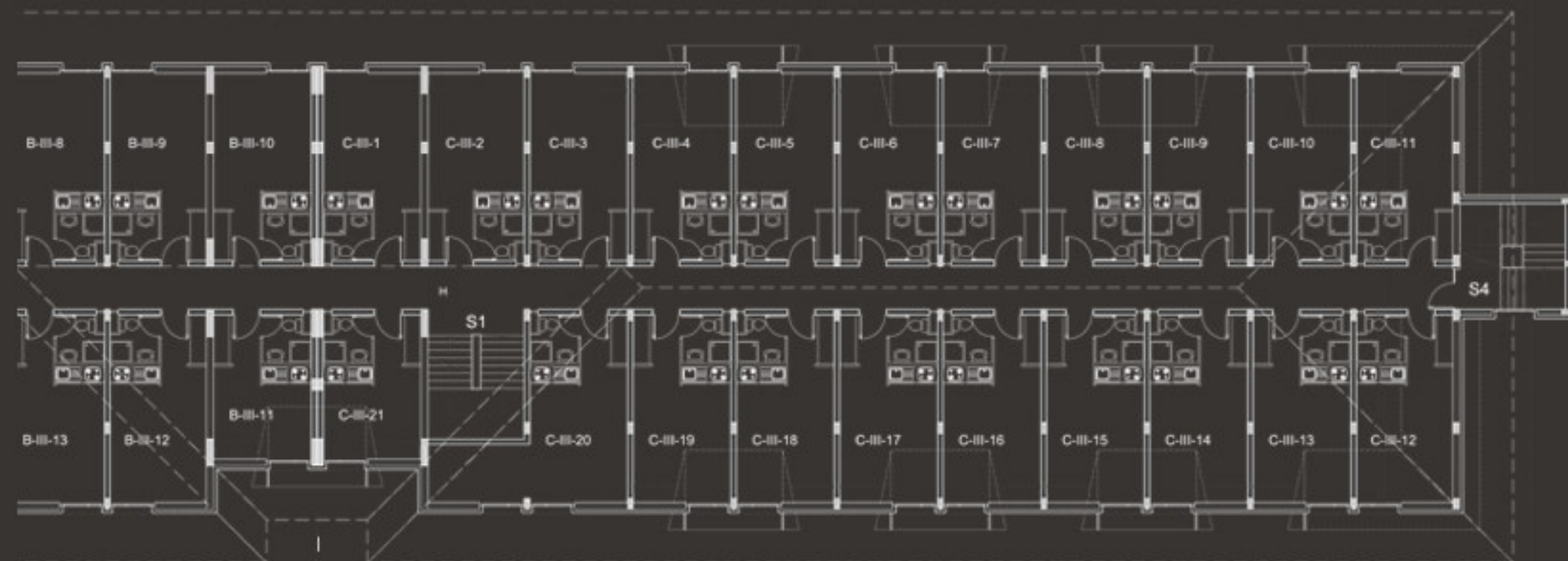
Lamela B • broja apartmana u lameli: 19
• ukupna površina apartmana u lameli 465 m²

Lamela C • broja apartmana u lameli: 21
• ukupna površina apartmana u lameli 522 m²

Tower A • tower apartment number : 4

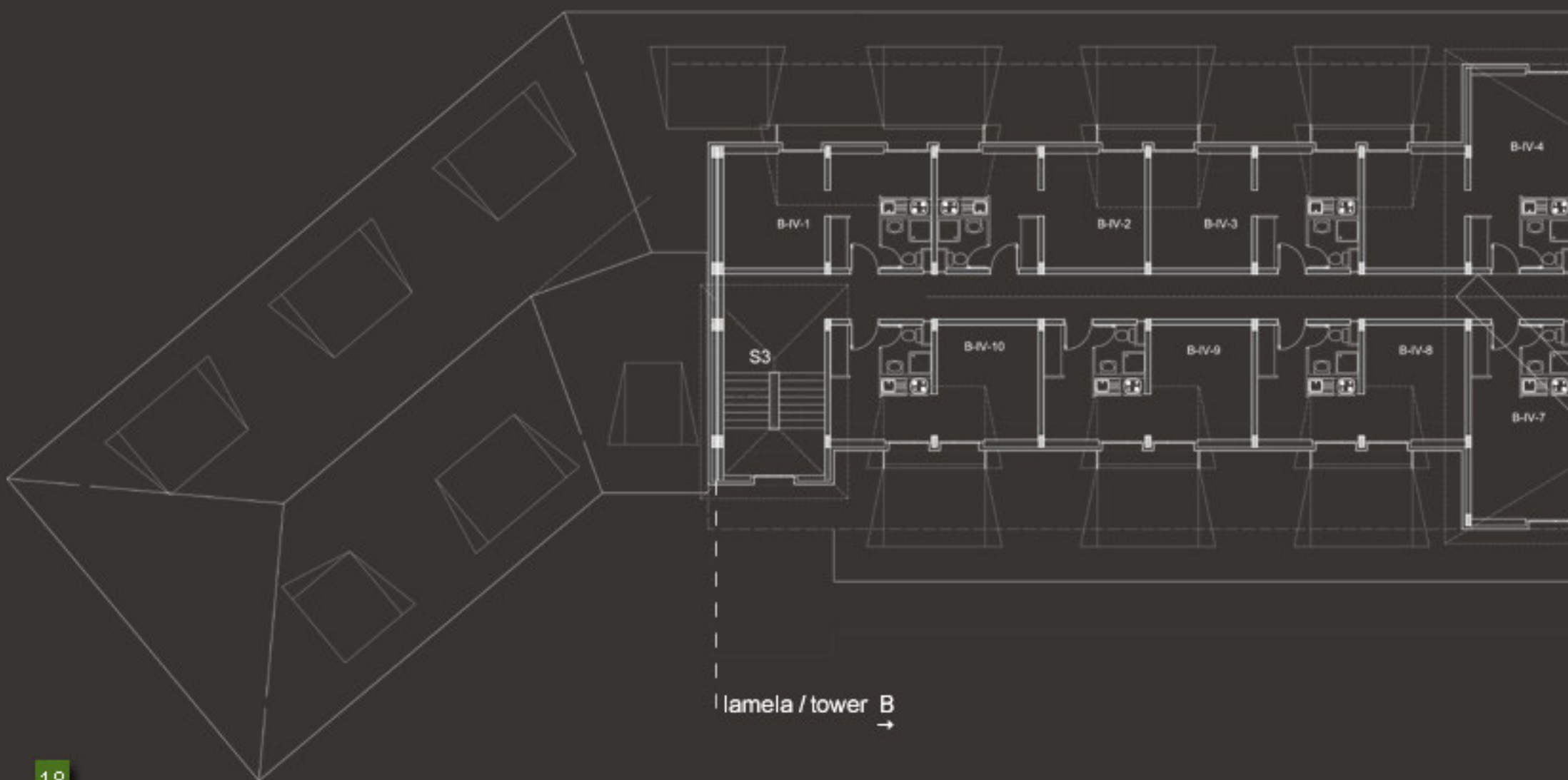
Tower B • tower apartment number : 19
• total apartment area of the tower 465 m²

Tower C • tower apartment number : 21
• total apartment area of the tower 522 m²



lamela / tower C
→

POTKROVLJE 2 | ATTIC 2

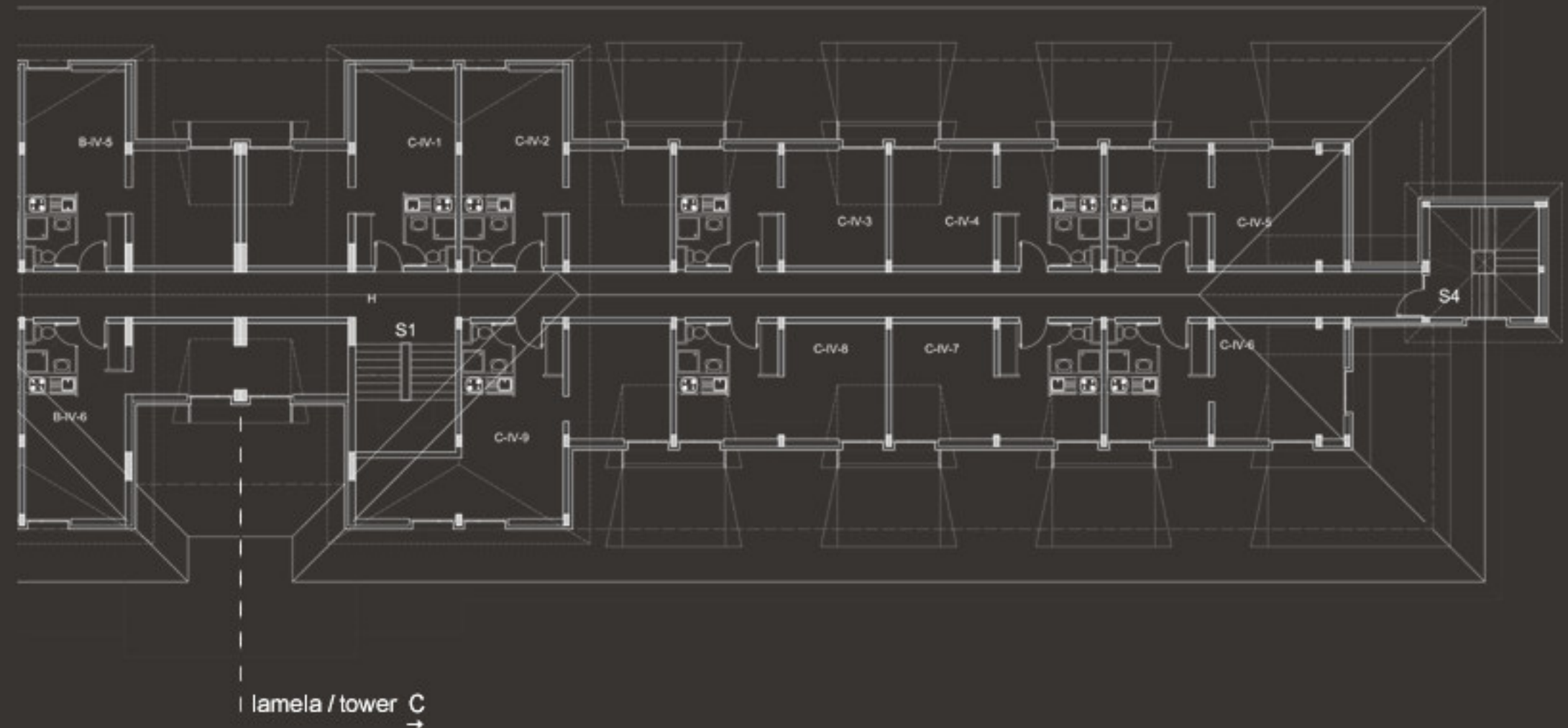


Lamela B • broja apartmana u lameli: 10
• ukupna površina apartmana u lameli 327 m²

Tower B • tower apartment number : 10
• total apartment area of the tower 327 m²

Lamela C • broja apartmana u lameli: 9
• ukupna površina apartmana u lameli 312 m²

Tower C • tower apartment number : 9
• total apartment area of the tower 312 m²





APARTMANI

Apartmani Bela Reka donose nov pristup organizaciji stanova u smislu racionalizacije korišćenja prostora, funkcionalnosti, završne obrade i opremljenosti. Završnoj obradi apartmana biće posvećena posebna pažnja, kako pri izboru materijala, tako i kontroli kvaliteta radova pri njihovoj ugradnji. Pažljivo isprojektovan raspored prostorija pruža, svakom apartmanu, puno otvorenog prostora bogatog prirodnim svetlom, kao i pogledom na široku panoramu prelepih planinskih predela.

Svi apartmani su opremljeni parketom I klase, sigurnosnim ulaznim vratima sa sigurnosnom bravom i kvalitetnim okovom, unutrašnjom stolarijom sa medijapan oblogama bojenih poliuretanom, uvoznom fasadnom stolarijom u dezenu prirodnog drveta. U kupatilima je ugrađena savremena uvozna sanitarija i keramika, dok su kuhinje opremljene kuhinjskim elementima, kao i svim potrebnim aparatima i uređajima.

Prostor apartmana je racionalno iskoriscen tako da svaki Apartman ima dnevnu sobu sa trpezarijom, kuhinju, predprostor i kupatilo. Kod nekih Apartmana se u sadržaju nalaze jos jedna ili dve spavaće sobe i terasa.

APARTMENTS

Apartments Bela Reka bring a new approach to the organization of apartments in term of rationalization of space using, functionality, final treatment and equipment. To the final treatment of apartments, special attention will be paid to the material selection as well as quality control of works during their build in. Carefully projected arrangement of rooms gives, to each apartment, many open space rich on natural light, as well as view to wide panorama of beautiful mountain areas.

All apartments are equipped with parquet of the first class, safety entrance door with safety lock and quality chain, interior carpentry with mediapan covers colored by polyurethane, imported facade carpentry in natural wood design. Modern imported sanitary and ceramics are built into the bathrooms, while the kitchens are equipped with kitchen elements as well as all necessary devices.

The space of apartments is rationally used, so each apartment has a living room with dinning room, kitchen, anteroom and bathroom. Some apartments have one or two bedrooms and the terrace.





A-01 24,80 m²



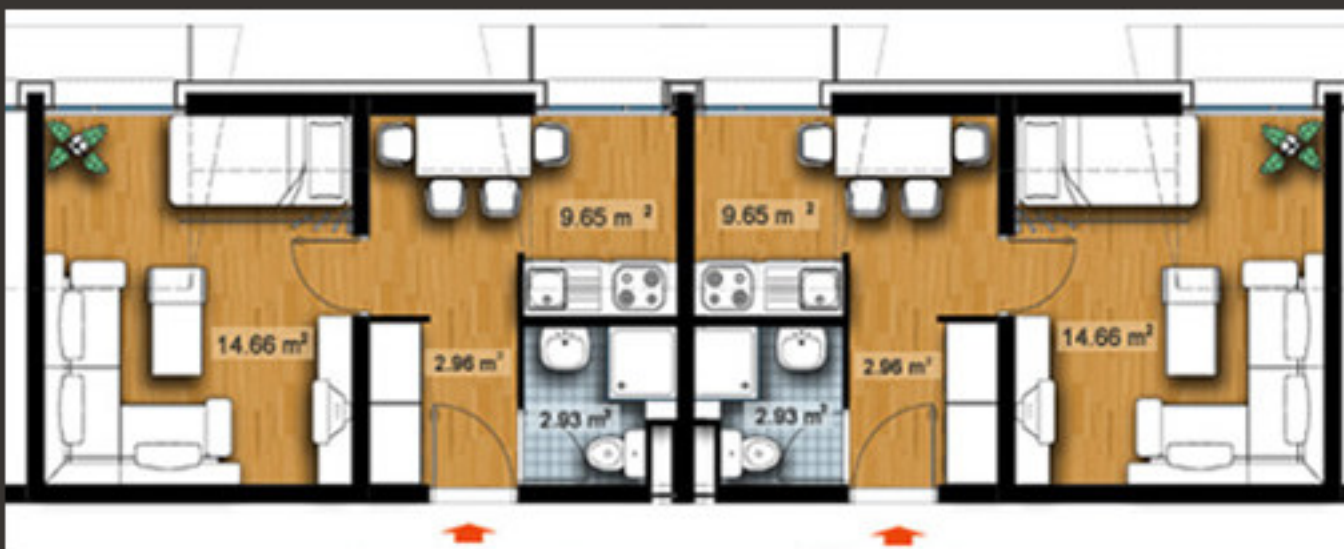
A-02 31,90 m²



A-03 31,90 m²



A-03 19,30 m²



A-05 30,20 m²



A-06 39,00 m²



A-07 46,01 m²



A-08 42,90 m²



A-09 33,74 m²



PRATEĆI SADRŽAJ

Apartmani Bela Reka su potpuno novi i sveobuhvatan koncept apartmana na našem tržištu koji, pred toga što se nalazi u strogom centru turističkog centra, teži da na jednom mestu obuhvati sve one sadržaje koji su neophodni savremenom čoveku kao što su: centralni restoran, cafe bar, konferencijska sala, igraonica za decu, mini market, ski servis, wellness centar, rent-a-car i ostali prateći sadržaji.

Za ljubitelje sportsko rekreativnih aktivnosti, u samom turističkom centru Brzeće nalaze se kako otvoreni tako i zatvoreni tereni za košarku, rukomet, odbojku i mali fudbal, tereni za tenis, teretane i ostalo.

Objekat Apartmani Bela Reka je jedan od prvih na Kopaoniku koji svojim stanarima pruža paket usluga fizičko-tehničkog obezbeđenja i održavanja zgrade. Usluga obuhvata čišćenje, održavanje i obezbeđenje objekta. Pored svih tri ulaza u objekat, same komunikacije i hodnici unutar objekta su pokriveni stalnim video nadzorom, kome će i sami vlasnici apartmana moći da pristupe putem interneta.

COMPLEMENTARY CONTENT

Bela Reka Apartments is totally new and universal concept of apartments on our market, which, except being at the very center of the tourist center, tends to gather all that contents in one place, that are necessary for the modern human like: central restaurant, coffee bar, conference room, play room for children, mini market, ski service, wellness center, rent-a-car and other complementary contents.

For sport recreation activities fans, there are open as well as closed fields for basketball, handball, volleyball and football, tennis court, gyms and other at the very tourist center Brzeće.

Apartments Bela Reka Structure is one of the first on Kopaonik that provides its tenants with a service package for physical-technical security and building maintenance. Service includes cleaning, maintaining and safety of the structure. Beside all three entrances into the structure, the communications and halls inside of the structure are also covered with constant video monitoring, to which the owners of apartments will also have approach through the Internet.



Bela Reka

APAR MANI
K O P A O N I K



OKRUŽENJE

Turistički centar Bela Reka – Brzeće se nalazu i podnožju Kopaonika koje je sve dostupnije i pitomije od vrhova, idealno za porodičan boravak, boravak sportista i dece, osoba sa zdravstvenim tegobama, pruža mogućnost pešačkih izleta do vodenica potočara, izvora, gejzira, vodopada, pećina.

Klisuraste doline Samokovke, Duboke, Lisine, Barske, Gobeljske, Ciganske i Brzečke reke, predstavljaju najlepše prirodne motive. Tu je i gejzir, prirodni fenomen i najveći vodopad u Srbiji, "Jelovarnik", visok 71 m. Područje "Jelovarnik" je izdvojeno i svrstano u prirodni rezervat Nacionalnog parka Kopaonik, osnovanog 1981. godine. U svom sastavu ima i pomenuti vodopad, a pripada selu Ravnište.

Staro rudarstvo pouzdano datira iz rimskog perioda, a svoj procvat doživljava u XIV i XV veku. Otuda je na Metođu, nekoliko stotina metara od zapuštenog rimskog rudnika, sagrađena crkva posvećena Sv. Metodiju, pored koje je kamena litica iz koje izvire voda, po narodnom verovanju, blagotvornog i isceliteljskog dejstva. U neposrednoj blizini je i gejzir, kao i potes "Gvozdac" sa sedam izvora.

SURROUNDING

Tourist center Bela Reka - Brzece is located in the foothill of Kopaonik, which is more and more approachable and more pleasant than tops, ideal for family stay, stay of sportsmen and children, persons with health difficulties, provides possibility for picnics on foot to the water mills, springs, geysers, waterfalls, caves.

Gorge valleys of Samokovka, Duboka, Lisine, Barska, Gobeljska, Ciganska and Brzecka river present the most beautiful nature motives. There is also a geyser, natural phenomenon and the biggest waterfall in Serbia, "Jelovarnik", 71 m high. Area of "Jelovarnik" is separated and classified as natural reservation of National park Kopaonik, founded in 1981. In its structure it has the mentioned waterfall, and it belongs to the village of Ravaniste.

Old mining undoubtedly dates from the period of Rome, and it had its blossom in XIV and XV century. That's why a church dedicated to St. Methodije was built on Metodj, few hundred meters from the abandoned Roman mine, next to which is a stone cliff where the water rises, according to popular belief, with beneficial and healing effects. Near by is a geyser as well as location "Gvozdac" with seven springs.





ŽIČARE I STAZE

Kopaonik ima subalpsku klimu. Zbog blizu 200 sunčanih dana godišnje Kopaonik s pravom nosi naziv "planina sunca", tako da preko cele godine nudi idealne uslove za aktivan odmor. Sneg pada od kraja novembra i zadržava se do maja, odnosno prosečno 159 dana godišnje.

Skijaški tereni nalaze se na nadmorskoj visini od 1.650 do 2.017 m i svrstavaju se u terene prve kategorije. Turistički centar raspolaže mrežom od 22 žičare, povezane u jedinstven sistem, 4 dečija lifta i opremljen je za sve kategorije skijaša. Ukupna dužina žičara iznosi 17.222 m, dok je dužina ski staza 44 km. Kapacitet sistema je 13.520 skijaša na sat. Gostima je na raspolaganju i 20 km staza za nordijsko skijanje.

Iza samog objekta Apartmani Bela Reka, se na udaljenosti od 20m' nalazi se polazna stanica žičare Bela Reka, kao i istoimena skijaška staza u dužini od 3.150 m, do kojih se stiže prolaskom kroz pasaz samog objekta. Povezanost žičare Bela Reka u jedinstven sistem žičara Kopaonika omogućava skijašima koji borave u podnožju dostupnost svih ski staza Kopaonika.

SKI LIFTS AND SKI SLOPES

Kopaonik has subalpine climate. Due to nearly 200 hundred sunny days a year, Kopaonik reasonably carries the name "mountain of the sun", so it offers ideal conditions for active holiday over the whole year. It snows from the end of November and it stays till May, that makes 159 days a year average.

Ski terrains are on 1.650 to 2.017 m height above the sea level and they are classified in the first category terrains. Tourist center possess a network of 22 ski lifts, connected into a unique system, 4 children's lifts, and it is equipped for all categories of skiers. Total length of ski lifts is 17.222 m, and the length of ski slopes is 44 km. System capacity is 13.520 skiers per hour. 20 km of slopes for Nordic skiing is at the disposal of the guests.

Behind the very structure of Bela Reka Apartments, there is a starting station of Bela Reka ski lift at the distance of 20 km, as well as ski path with the same name 3.150 m long, and they can be reached by going through the passage of the very structure. Connection of the ski lift Bela Reka into the unique system of ski lifts of Kopaonik makes available all ski lifts of Kopaonik to all the skiers, who stay in the foothill.

KARAKTERISTIKE SKI CENTRA / SKI FACTS

Visina centra / High of Resort	1770 m
Najviši vrh / High of top station	2657 m
Ukupna dužina staza / Total length of slopes	4400 m
Ukupna kapacitet staza / skijaša / Total capacity of the skiers	27000
Broj skijaških staza / Number of lifts	20
Broj bebi skijaških staza / Number of baby lifts	2
Broj brzi skijaški / Easy slopes	10
Broj srednje skijaški / Medium slopes	7
Broj teži skijaški / Difficult slopes	3
Vertikalna visina skijaša / Max. vertical rise	552 m
Najduža staza / Longest run	2500 m
Dužina najteže staze / Length of night slope	400 m
Najduži skijaški / Cross country trails	18 km

1. Ekspresni skijaški staza, 2. Uspadni skijaški staza, 3. Uspadni skijaški staza, 4. Uspadni skijaški staza, 5. Uspadni skijaški staza, 6. Uspadni skijaški staza, 7. Uspadni skijaški staza, 8. Uspadni skijaški staza, 9. Uspadni skijaški staza, 10. Uspadni skijaški staza, 11. Uspadni skijaški staza, 12. Uspadni skijaški staza, 13. Uspadni skijaški staza, 14. Uspadni skijaški staza, 15. Uspadni skijaški staza, 16. Uspadni skijaški staza, 17. Uspadni skijaški staza, 18. Uspadni skijaški staza, 19. Uspadni skijaški staza, 20. Uspadni skijaški staza, 21. Uspadni skijaški staza, 22. Uspadni skijaški staza

Bela Reka
APAR MANI

ŽICE I STAZE / LIFTS AND SLOPES

Broj Code	Ime Name	Tip Type	Dužina Length	Uspadni Rise	Tip staze Type of run
1.	Sunčana dolina	☒	644 m	152 m	☐
2.	Sunčana dolina	☒	3437 m	190 m	☐
3.	Mala jama	☒	450 m	75 m	☐
4.	Pančičev vrh	☒	1385 m	248 m	☐
5.	Čenar	☒	3832 m	277 m	☐
6.	Đuboka I	☒	1409 m	380 m	☐
7.	Karaman galeb	☒	1236 m	170 m	☐
8.	Mali Karaman	☒	1042 m	190 m	☐
8a.	Mali Karaman A	☒	1042 m	190 m	☐
9.	Mali Karaman B	☒	1042 m	190 m	☐
10.	Karaman	☒	817 m	140 m	☐
11.	Janar	☒	198 m	58 m	☐
12.	Gobetja reljef	☒	705 m	180 m	☐
12a.	Gobetja reljef	☒	705 m	180 m	☐
12b.	Gobetja reljef	☒	705 m	180 m	☐
13.	Kreševska kopa	☒	836 m	140 m	☐
14.	Bela reka I	☒	1202 m	305 m	☐
15.	Bela reka II	☒	1388 m	500 m	☐
16.	Štruga	☒	117 m	232 m	☐
17.	Udencica	☒	780 m	267 m	☐
18.	Gosolac	☒	914 m	289 m	☐
19.	Đuboka II	☒	1107 m	395 m	☐
20.	Kičina	☒	1910 m	471 m	☐
21.	Malina	☒	300 m	45 m	☐

OSNOVNE
POSREDOVANJE
POSREDOVANJE



**SKI CENTAR
KOPAONIK**

VIKEND NASELJE
RUDARICA
KASKA

JOŠANUČKA BANJA
KRALJEVO
KRAGUJEVAC
BEOGRAD

INVESTITOR / INVESTOR
BIRO INZENJERING

TEL / PHONE
+381 35 23 18 75
+381 35 22 54 33

WEB
www.apartmani-kopaonik.com

E-MAIL
prodaja@apartmani-kopaonik.com

Bela Reka
APAR  MANI
K O P A O N I K